



**The Business of Music: Celebrating 10 Years
Music & Tech Conference & Showcase Festival
October 14-17, 2025**



Arlo
Williamsburg

Venue Event Spaces

96 WYTHE AVE. BROOKLYN, NY

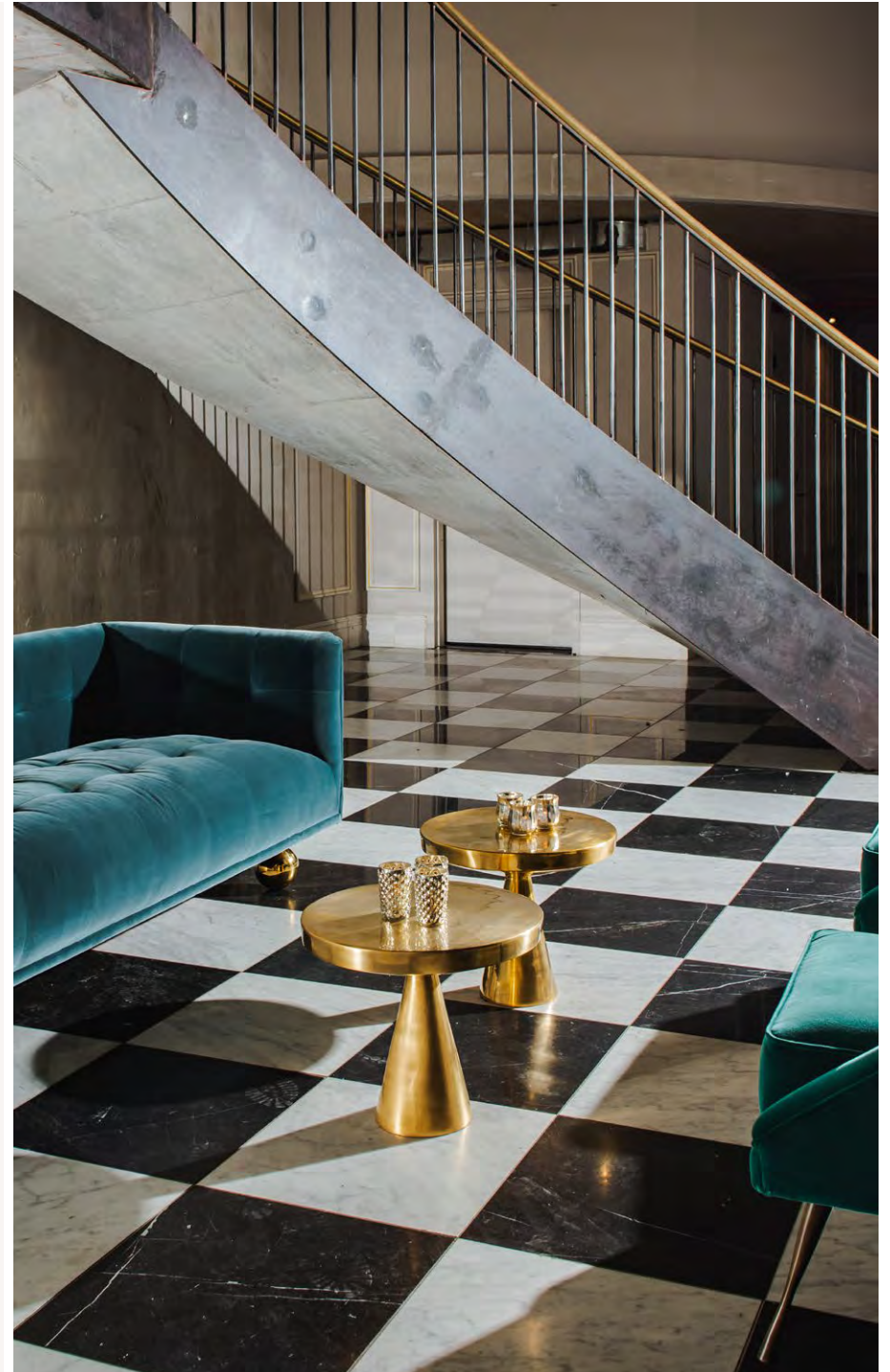


THE BALLROOM

The Ballroom

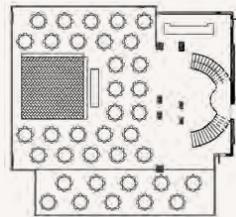
The ballroom is Arlo Williamsburg Hotel's largest and most versatile space. Rich in character and luxury with 30-foot-tall soaring ceilings, chandeliers, sweeping staircases and parquet & marble floors. The Ballroom is a stately event space with shine and swagger.

6,500 SQ. FEET

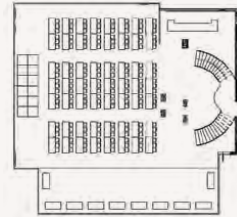




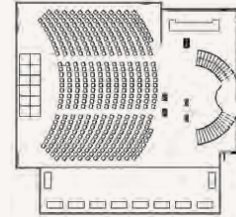
Ballroom Configurations



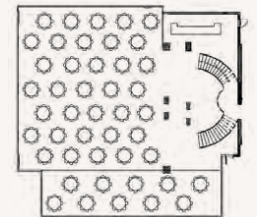
DINNER & DANCING
UP TO 300



CLASSROOM-STYLE
UP TO 170



MEETINGS, KEYNOTES
UP TO 400



SEATED DINNER
UP TO 360



THE MIRROR BAR

The Mirror Bar

An emerald gem tucked inside Arlo Williamsburg Hotel, The Mirror Bar features French empire crystal chandeliers hung from 17-ft. ceilings, reclaimed wood floors, luxurious velvet sofas and cool tone finishing.

This venue can accommodate up to 70 guests seated and 120 guests standing

1,600 SQ. FEET

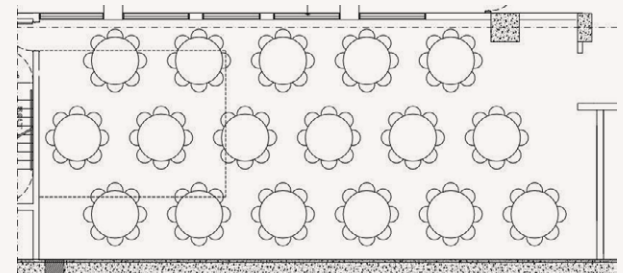




The Mirror Bar Configurations



**UP TO 120 GUESTS FOR PRESENTATIONS
AND MEETINGS**



**UP TO 70 GUESTS FOR
SIT DOWN DINNER**

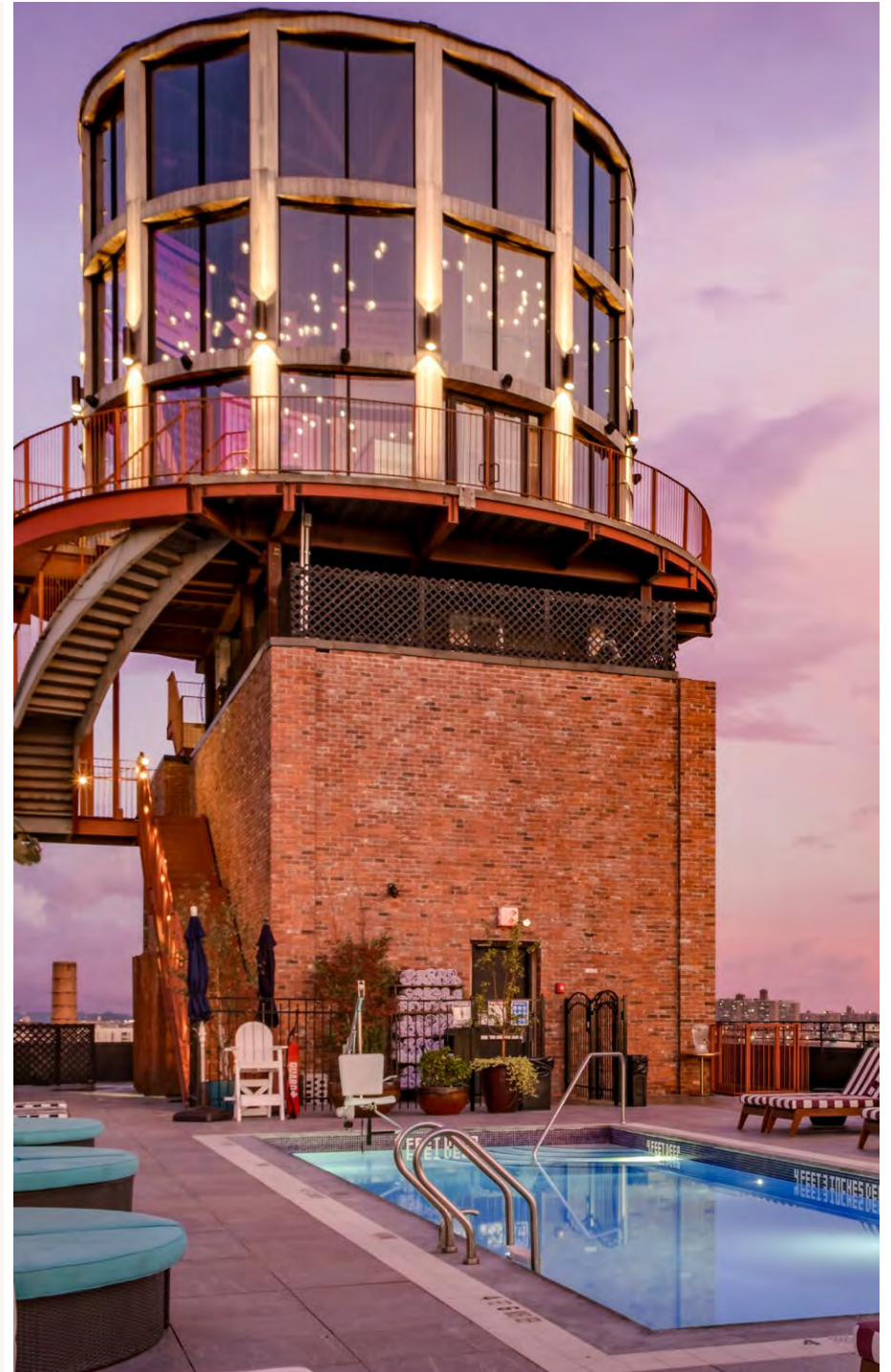


ROOFTOP

Rooftop

The Rooftop Water Tower, pool and lounge features 360 degree views of NYC, alfresco inside and poolside dining and deliciously crafted cocktails.

10,000 SQ. FEET



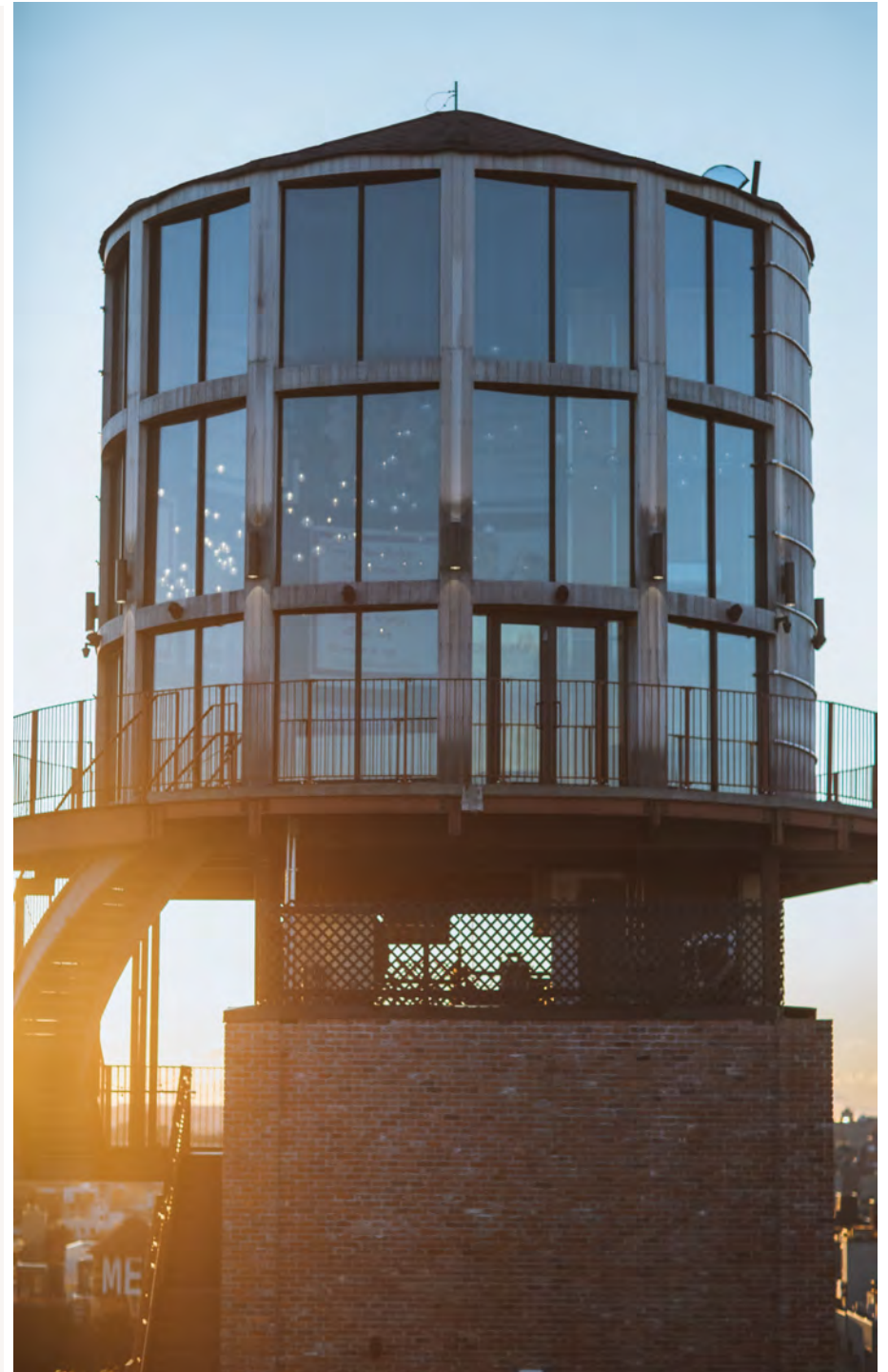


THE WATER TOWER

The Water Tower

Breathtaking views of Brooklyn, the East River, and Manhattan's sparkling skyscrapers, The Water Tower is sublime for intimate private gatherings and much more. Experience this bird's-eye view and bespoke catering options.

1,500 SQ. FEET





My advice
I DON'T USE IT ANY MORE

If I can make it there
I'll make it anywhere
It's up to you
New York, New York
Frank Sinatra

I improve with Wine!

The only lie I
ever told you is
that I liked you
when I already knew
I loved you.

No one
looks back on
their life and
remembers
the nights
they had
plenty of
sleep

"Every New York
has come
good half-hour
into the work
and is trying
all his life
to make it up
Charles Wentworth

I'm not saying I'm
WONDER WOMAN
I'm just saying
no one has seen
the two of us in
a room together

DEAR BRAIN...
PLEASE SHUT UP!

If it's
the thought
that counts,
I should
probably
be in jail



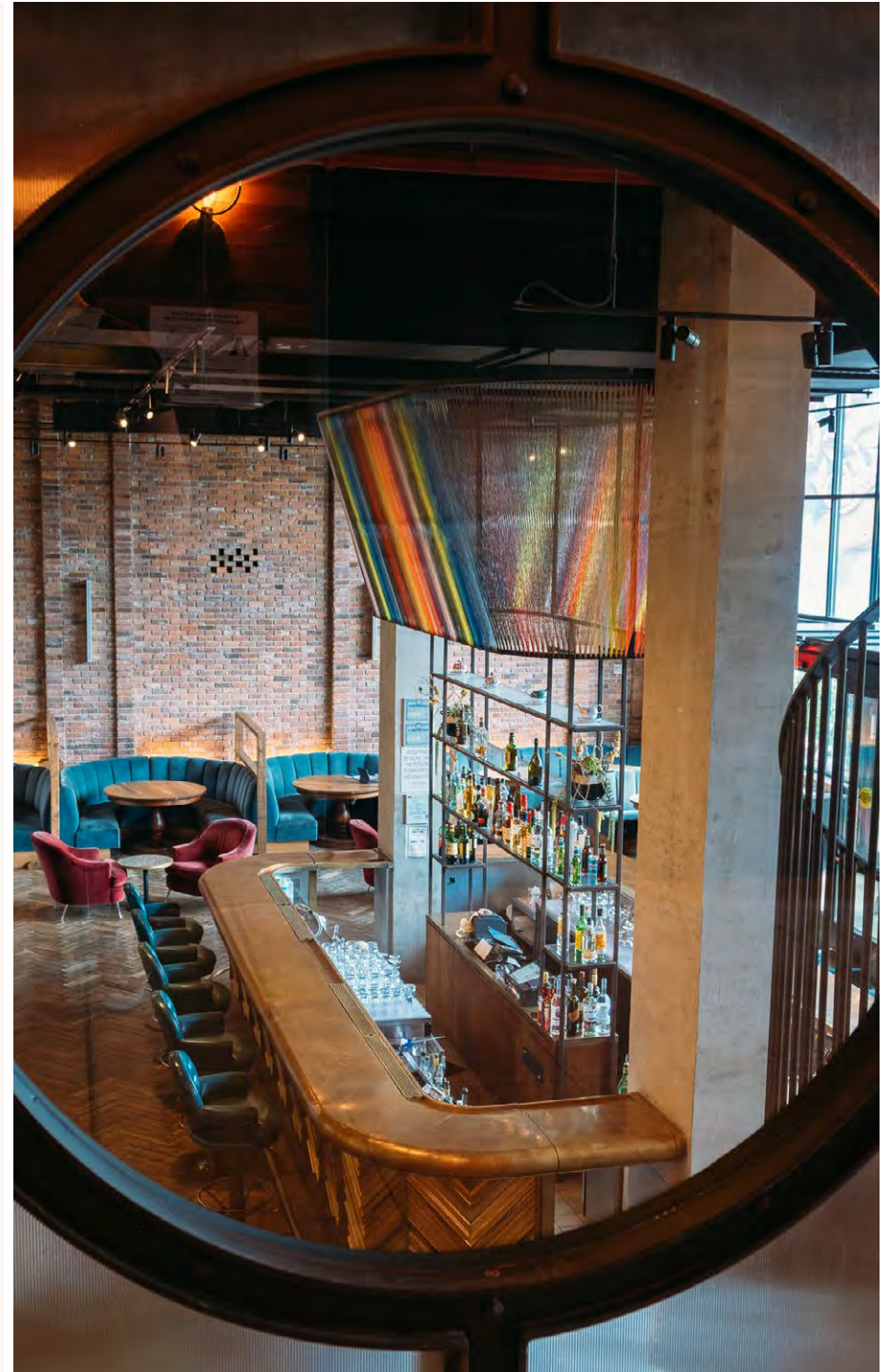


THE LOBBY BAR

The Lobby Bar

The hotel opens onto The Lobby bar. The reclaimed wood floors, exposed ceiling detail and brick walls are intended to evoke the neighborhood's industrial roots. Hanging above the bar and tracing its perimeter is an installation by Eric Reiger, a local street artist. Whether seated in our lush velvet banquettes or having a cocktail at the Bar, this space can host any occasion.

3,000 SQ. FEET







CITY VIEW SUITE

City View Suites

City View Suites are located on the west side of the Hotel, overlooking the East River. The floor to ceiling windows give an unobstructed panoramic view of the city skyline. The suite is an intimate location for meetings and private parties.

- dimensions: 49' L x 9'4" W
- floor-ceiling windows: 10'4" x 4'4"

650 SQ. FEET





**The Business of Music: Celebrating 10 Years
Music & Tech Conference & Showcase Festival
October 14-17, 2025**



Contact:

**Bobby Haber
bobby@mondo.nyc**